

MATTE MOCHA

Get the look



Use the recommended shades to create the Matte Mocha look OR Select your own shades and follow the recommended steps to create a fresh new look of your own!

PRODUCTS TO USE

Cranberries Eyeshadow Crayon Duo

Coffee Shop Color Balance Eyeshadow

Highlights Color Balance Eyeshadow

Perfect Powder Foundation

Highlighting Bronzer

Bare Moisture Balance Lipstick

Cashmere Moisture Balance Lip Gloss



1. Blend the matte shade of the *Cranberries Crayon Duo*.



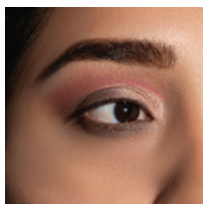
2. Blend the shade *Chocolate* (left top of *Coffee Shop Trio*) on the outer corner of the eye.



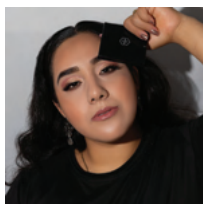
3. Blend the shade *Espresso* (bottom of *Coffee Shop Trio*) over *Chocolate*.



4. Blend the shimmery side of the *Cranberries Crayon Duo* on the inner corner of lid and blend the shade *Dune* (top left shade of *Highlights Trio*) as well.



5. Blend *Glow* (top right shade of *Highlights Trio*) under the eye brow and and blend *Espresso* (bottom of *Coffee Shop Trio*) under the water line of the eye.



6. Finish with a dusting of bronzer and add a touch of color with *Moisture Balance Lipstick* and/or *Lip Gloss*.